

VANDAELE[®]



FC400
SPECIALY ADAPTED FORESTRY
WOOD CHIPPER

VANDAELE®

FC400
SPECIALY ADAPTED FORESTRY
WOOD CHIPPER



Special designed unit, only to be used in pure forestry applications, or in a completely protected working environment.



Specially designed to obtain an optimum visibility on the infeed system.

Special designed unit, only to be used in pure forestry applications, or in a completely protected working environment. Specially designed to obtain an optimum visibility on the infeed system. The FC400 wood chipper has been specially developed to meet with some of the specific demands in the forestry industry. Suitable for: deforestation, forest cleaning, biomass production facilities, etc. Built according to "Scandinavian Standards".

The FC400 is unique in its kind because :

- SIMPLE MAINTENANCE
- NO SHARPENING OF THE KNIVES REQUIRED!
- SPECIAL CE REGULATIONS FOR FORESTRY MACHINES
- VERY ROBUST CONSTRUCTION
- OPTIMUM VISIBILITY ON THE INFEED OPENING

Features and benefits of the Vandaele wood chippers:

- Standard equipped with TUNGSTEN-CARBIDE knives and counter knives in sections.
- Sections are easily replaceable
- Renders sharpening and adjusting of the knives superfluous,
- Extreme long life span,
- Noise reduced knife disc, integrated in a wear resistant housing,
- Direct power linkages, no belts or chain drives,
- Robust Construction, years of experience incorporated,
- Very big capacity.

The FC400 is hung in the rear 3-point of a tractor by means of an intermediate frame with a crane attached to it. The operations of both machine and crane are done from inside the tractor cabin.





Special adapted A-frame with hydraulic stabilizers for mounting the forestry crane.



Special designed open top cover to expose the top infeed roll. This guarantees an optimum visibility on the infeed system.

Technical specifications

FC400 ; Basic machine:

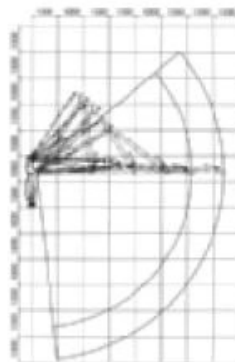
- Machine without infeed funnel for improved visibility on the infeed rolls,
- Can only be ordered in combination with a forestry crane with a parallelogram system,
- Unique parallelogram crane, reach 6,10 m with hydraulic rotator and tree clamp.
- Classic linear handle controls,
- Adapted, built to size forestry crane support A-frame with hydraulic legs,
- Adapted 3-point frame on the chipper to A-frame (extra short connections),
- Adapted top cover for optimum visibility on the infeed rolls, also adapted to allow maximum swing possibilities to the crane,
- Chipper disc ø 1000 mm, equipped with 2 knives in CARBIDE TUNGSTEN (2 x 9 sections),
- Counter knife in CARBIDE TUNGSTEN,
- Number of revolutions of the disc : 1000 rpm,
- Anti-Stress system SPECIAL ADVANCED included,
- PTO shaft size at the main axle end: 1" 3/4 ,
- Hydraulically driven infeed rolls with built in pump group, stop – reverse coupling and chip size regulation from 1 to 25 mm,
- Electrically operated cable controls for the infeed rolls: infeed – stop – reverse – emergency stop, operated by remote control system when in combination with remote controlled crane,
- High ejection chute, 3 m, extra long (4,50m) hydraulically rotation 360° on reinforced ball bearing, by means of tractor hydraulics, with manually adjustable flap,
- Round wood diameter max: 270 mm / 11",
- Infeed opening between the rolls: 400 mm x 270 mm / 16" x 11",
- Noise reducing coating,
- 3-point linkage cat II and III,
- Equipped with PTO-shaft with free wheel W2500,
- Centralised greasing of the lower infeed roll,
- Minimum required tractor HP = 110 HP,
- Weight including crane and A-frame = 2800 kg.

FC400 ;

Optional:

- Forestry crane model 6140L with telescopic second arm +1.2m extra reach,
- Low pressure servo-control Parker Hannefin joysticks for crane operation.
- Proportional joystick controls Danfoss for crane operation,
- Radio controlled crane operation and infeed rolls,
- Different RAL colour instead of RAL 2011 & 7011.

	61-40	61-40L
Lift moment BRUTO (kNm)	38	38
Reach (m)	6,1	7,3
Telescope (m)		1,2
Lift capacity extended arm (kg)	450	360
Rotation torque (kNm)	12	12
Rotation (°)	380	380
Pressure (Mpa)	18	18
Hydr. capacity (l/min)	40	40
Weight (kg)	625	675



Adapted, extra short, extra reinforced infeed funnel, foreseen for crane feeding only.



Extra long hydraulic tum able ejector chute for blowing material over the tractor cabin.



The FC400 comes standard with a forestry crane with a parallelogram system.



Alternative unit = TV27-40 wood chipper with adapted funnel with steel conveyor belt for crane feeding.

